

**CITO-GR10D - LED STREET LIGHT CATALOG**  
**2024**

# ABOUT CITOCORE

At Fuzhou Citocore Technology, we specialize in the development and distribution of comprehensive solutions in security, lighting, and urban infrastructure, with the goal of offering reliable and accessible products for projects of all scales.

Our portfolio includes a wide range of technologies that combine innovation and functionality, such as:

- Intelligent video surveillance cameras with real-time video analysis capabilities.
- Metal poles and structures designed for telecommunications and public lighting projects.
- LED lighting systems suitable for streets, public areas, and industrial environments, with high standards of efficiency and durability.
- Solar and portable energy solutions aimed at promoting the use of clean and sustainable technologies.

## The Cutting Edge In Security Cameras and Street Lighting Solutions

Headquartered in Fuzhou, China, and in partnership with strategic allies, we work to make these solutions accessible to distributors, installers, and operators, while also providing technical advice and close support at every stage of the project.

Our commitment is to become a reliable partner, acting with transparency, responsibility, and a practical-oriented vision. We believe that the integration of security, infrastructure, and lighting is a fundamental pillar for the development of modern and sustainable communities, which is why we are dedicated to providing complete, scalable solutions tailored to the real needs of each client.



# ABOUT LED STREET LIGHT

"Citocore's LED Street Light represents the pinnacle of outdoor lighting innovation, delivering superior performance and longevity. Our street lights are built to withstand harsh weather conditions, ensuring reliability in any environment. With adjustable brightness levels and precise light distribution, they provide customizable lighting solutions for various urban and suburban settings.

Designed for easy installation and low maintenance, Citocore's LED Street Light is the choice for municipalities, urban planners, and developers seeking sustainable lighting solutions. Backed by rigorous quality assurance processes, our lights meet industry standards for efficiency and safety.

Illuminate your streets, highways, and public spaces with confidence, knowing that Citocore's LED Street Light is engineered for durability and performance. Experience the difference of superior lighting technology with Citocore."



## OVERVIEW

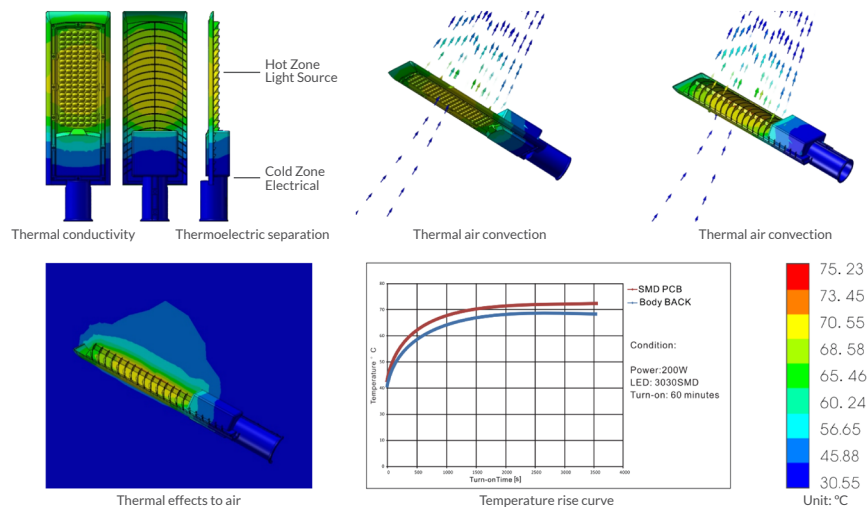


## FEATURES

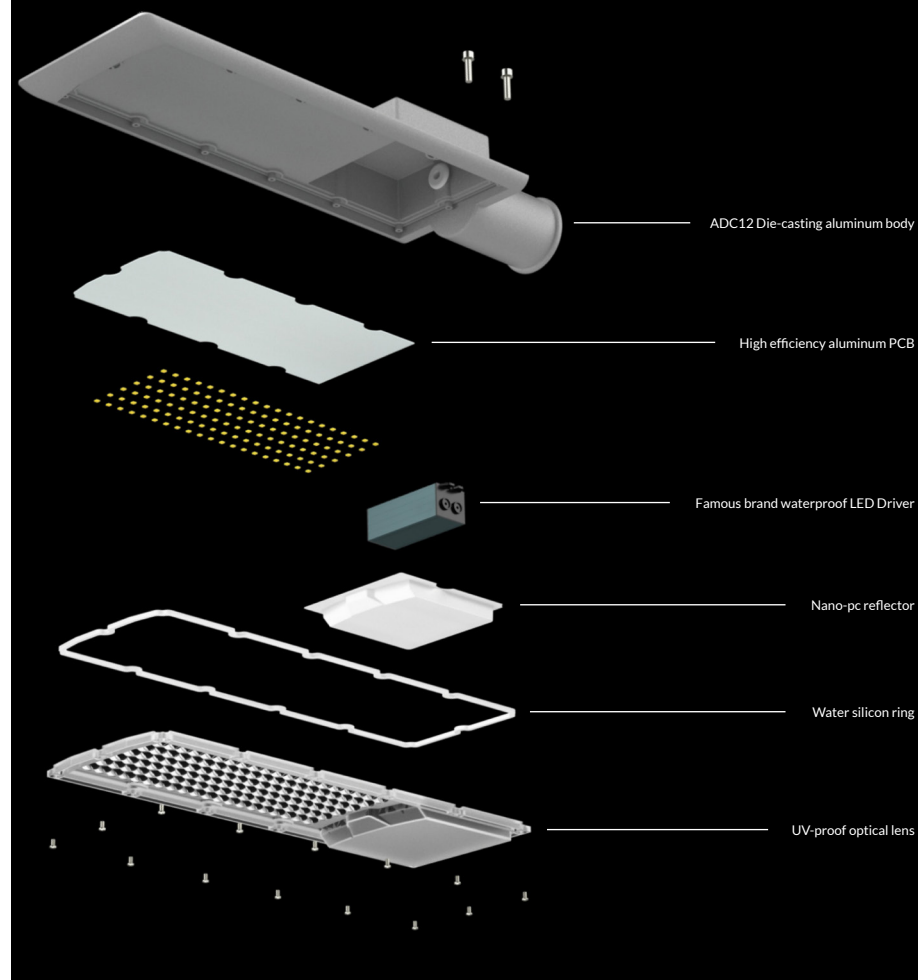
- AC 100-265V, 50/60Hz.
- Output 110 Lm/W.
- The UV Lens and the aluminum substrate are perfectly matched to illuminate the road evenly.
- High density anti-oxidation, maple leaf heat dissipation, to ensure the service life of lamp beads.
- Good waterproof performance, up to IP66.
- Photosensitive controller, it will automatically turn off when it is bright.
- Street lamp surge protector lightning 20KV, no fear of outdoor thunderstorm weather.

## THERMAL MANAGEMENT

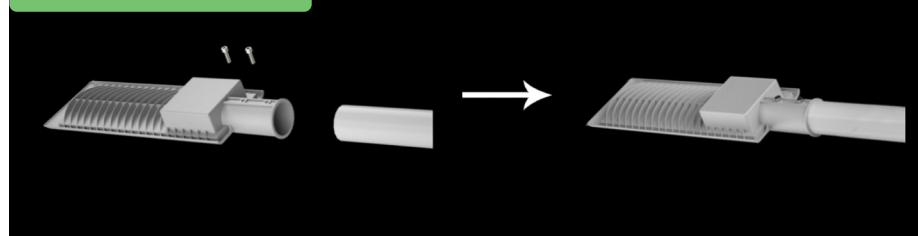
Structure is optimized by advanced FEA technology. Achieving longer lifespan at best cost-efficiency.



## EXPLODED



## INSTALLATION



## APPLICATIONS

Widely applicable to road, expressways, parks, plazas and villas, etc.

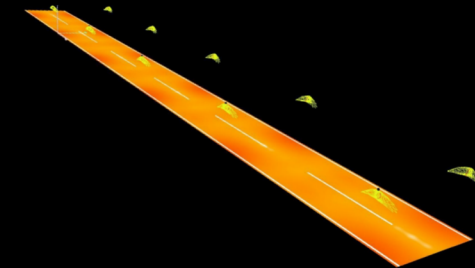
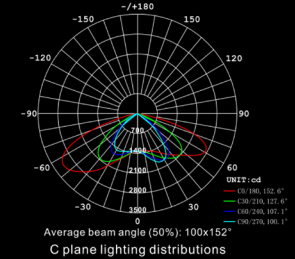
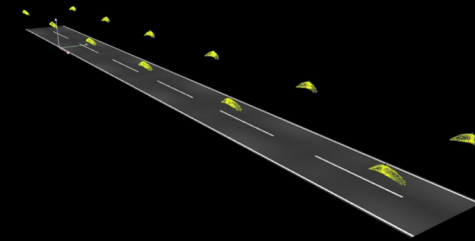


Streamline shape wind-proof design

4

## OPTICS

Tech support: Tell us the room length, width, height and the usage.  
We have an engineer team to respond the dialux simulations for lights quantity calculation and effects. IES files are available upon request.



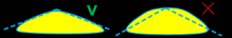
Energy Saving Design



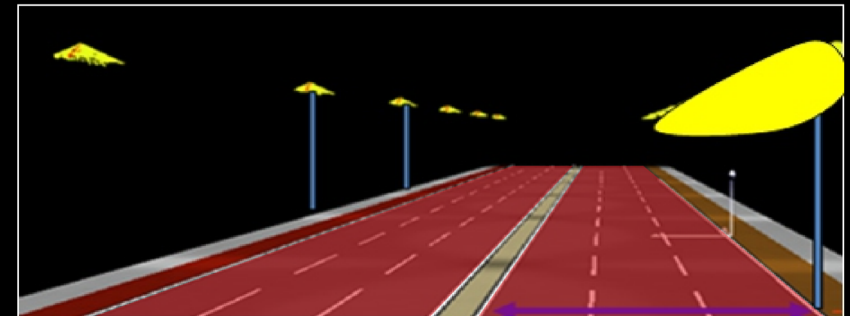
Highly Uniformity Design



Cut-off Angle Design

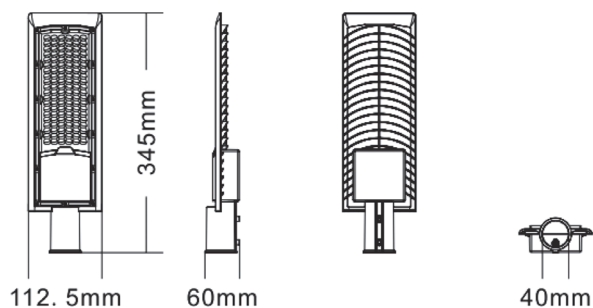
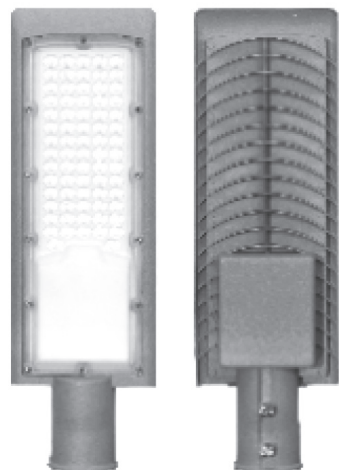


Professional road light distribution design,  
illuminate the road without dazzling.

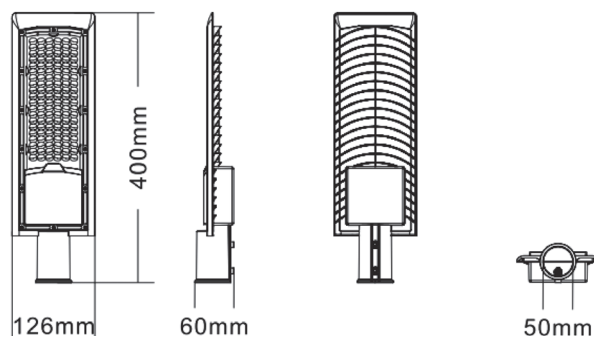
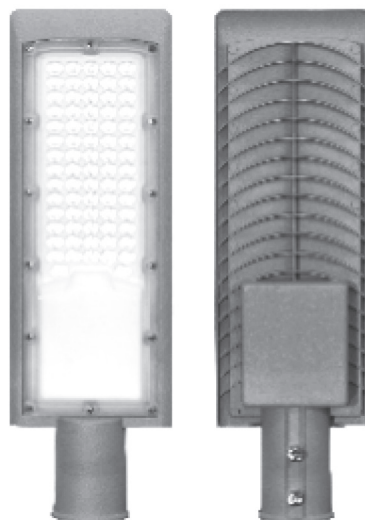




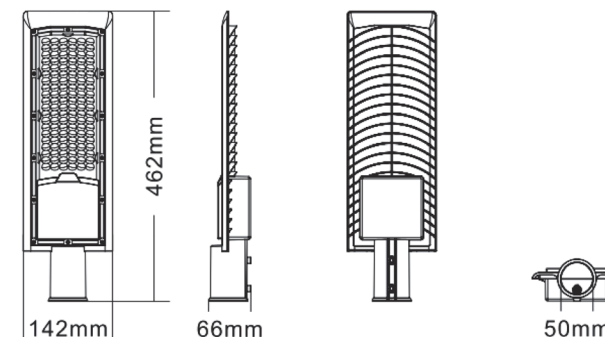
## CITO-GR10D (30W)



## CITO-GR10D (50W)



## CITO-GR10D (100W)



## SPECIFICATIONS

Size	345*112.5*60mm
Power	30W
Light source (QTY)	LED SMD3030 (48)
Material	Die-cast aluminum
Voltage	AC100-265V
Beam angle	130°60 degree
CCT	2700-6500K
CRI	>70
PF	≥0.9
Certification	CE, RoSH

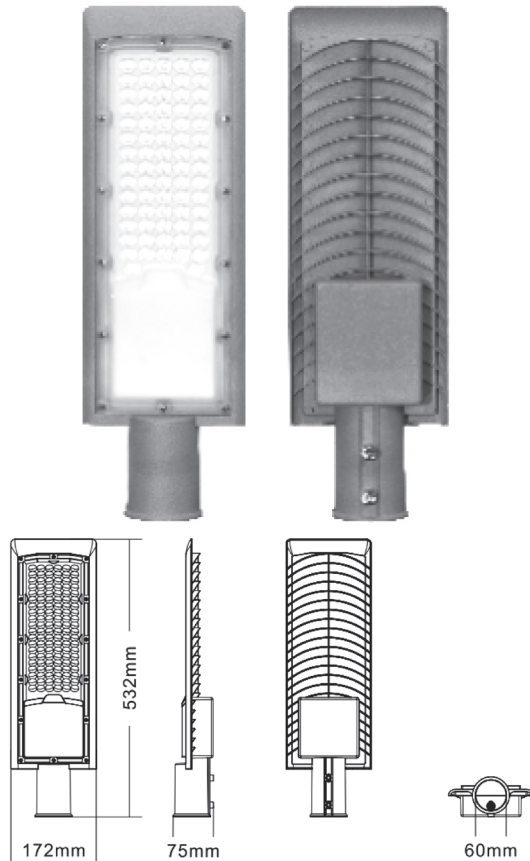
## SPECIFICATIONS

Size	400*126*60mm
Power	50W
Light source (QTY)	LED SMD3030 (72)
Material	Die-cast aluminum
Voltage	AC100-265V
Beam angle	130°60 degree
CCT	2700-6500K
CRI	>70
PF	≥0.9
Certification	CE, RoSH

## SPECIFICATIONS

Size	462*142*66mm
Power	100W
Light source (QTY)	LED SMD3030 (120)
Material	Die-cast aluminum
Voltage	AC100-265V
Beam angle	130°60 degree
CCT	2700-6500K
CRI	>70
PF	≥0.9
Certification	CE, RoSH

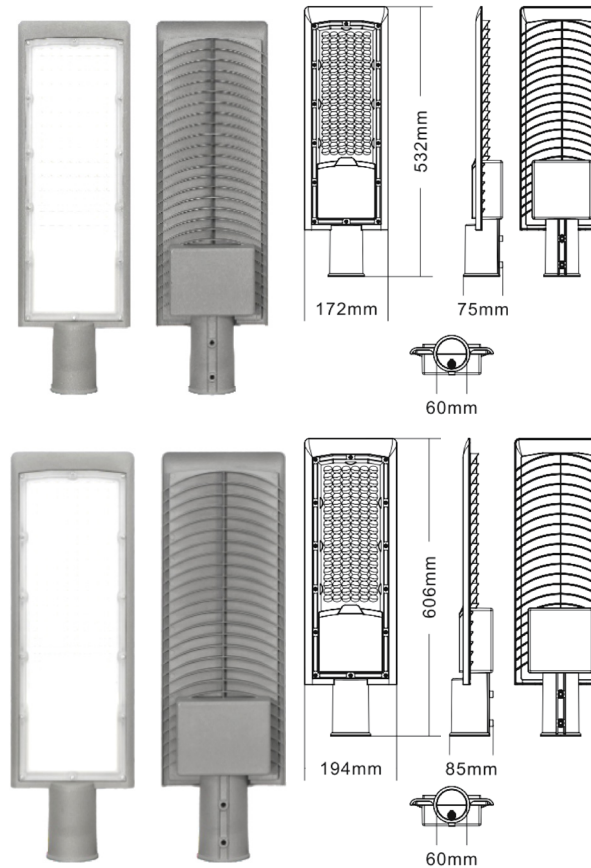
## CITO-GR10D (150W)



## SPECIFICATIONS

Size	532*172*75mm
Power	150W
Light source (QTY)	LED SMD3030 (216)
Material	Die-cast aluminum
Voltage	AC100-265V
Beam angle	130*60 degree
CCT	2700-6500K
CRI	>70
PF	≥0.9
Certification	CE, RoSH

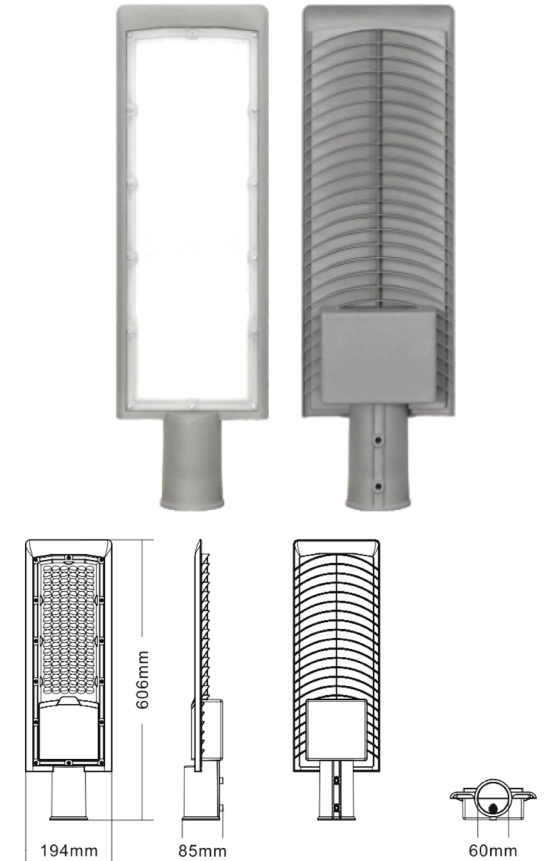
## CITO-GR10D (200W)



## SPECIFICATIONS

Size	532*172*75mm	606*194*85mm
Power	200W	
Light source (QTY)	LED SMD3030 (216)	LED SMD3030 (288)
Material	Die-cast aluminum	
Voltage	AC100-265V	
Beam angle	130*60 degree	
CCT	2700-6500K	
CRI	>70	
PF	≥0.9	
Certification	CE, RoSH	

## CITO-GR10D (240W)



## SPECIFICATIONS

Size	606*194*85mm
Power	240W
Light source (QTY)	LED SMD3030 (288)
Material	Die-cast aluminum
Voltage	AC100-265V
Beam angle	130*60 degree
CCT	2700-6500K
CRI	>70
PF	≥0.9
Certification	CE, RoSH

## PACKING

SPECIFICATIONS							
Power	30W	50W	100W	150W	200W	200W	240W
Package size (mm)	625*435*410	420*410*350	470*370*310	550*410*370	550*410*370	625*435*410	625*435*410
QTY/CTN	20	15	10	10	10	10	10
CMB	0.11146875	0.06027	0.053909	0.081918	0.081918	0.11146875	0.11146875
20' GP/PCS	5023	6471	4823	3174	3174	2500	2500
40' GP/PCS	10047	13937	10388	6836	6836	5023	5023
20' HQ/PCS	12200	16924	12614	8301	8301	6100	6100

## CAUTIONS

1. Installation must be done by professional electricians.
2. Do NOT take apart the product. It may be dangerous.
3. Do NOT stare at the light with naked eyes. It is harmful to eyes.
4. For outdoor lighting, waterproof measurements must be done to the cable terminals.

## WARRANTY

1. All LED street light are warranted by the manufacturer to be free of defects in material and workmanship for 2 years.
2. Warranty becomes void if the products is modified, improperly installed or used, damaged by accident or neglect, or if any parts are improperly installed or replaced by the user.
3. During the period of warranty time, if some products of us fails during normal circumstances and applications or have any defects above defined, we shall at our own choice replace or repair the defective products at no charge. And the liability claims would NOT exceed the value of the product itself.





Fuzhou Citocore Technology is a leading provider of advanced fiber optic solutions with headquarters in Fuzhou, China, and production facilities in Shanghai and Ningbo. Their team of top-tier engineers collaborates with global distributors and operators.

**Phone**

(+86) 18116415220

**Email**

info@citocore.com

**Head Office Address**

Office B802, 8th floor, No. 121 East Street, Gulou District,  
Fuzhou City, Fujian Province, China